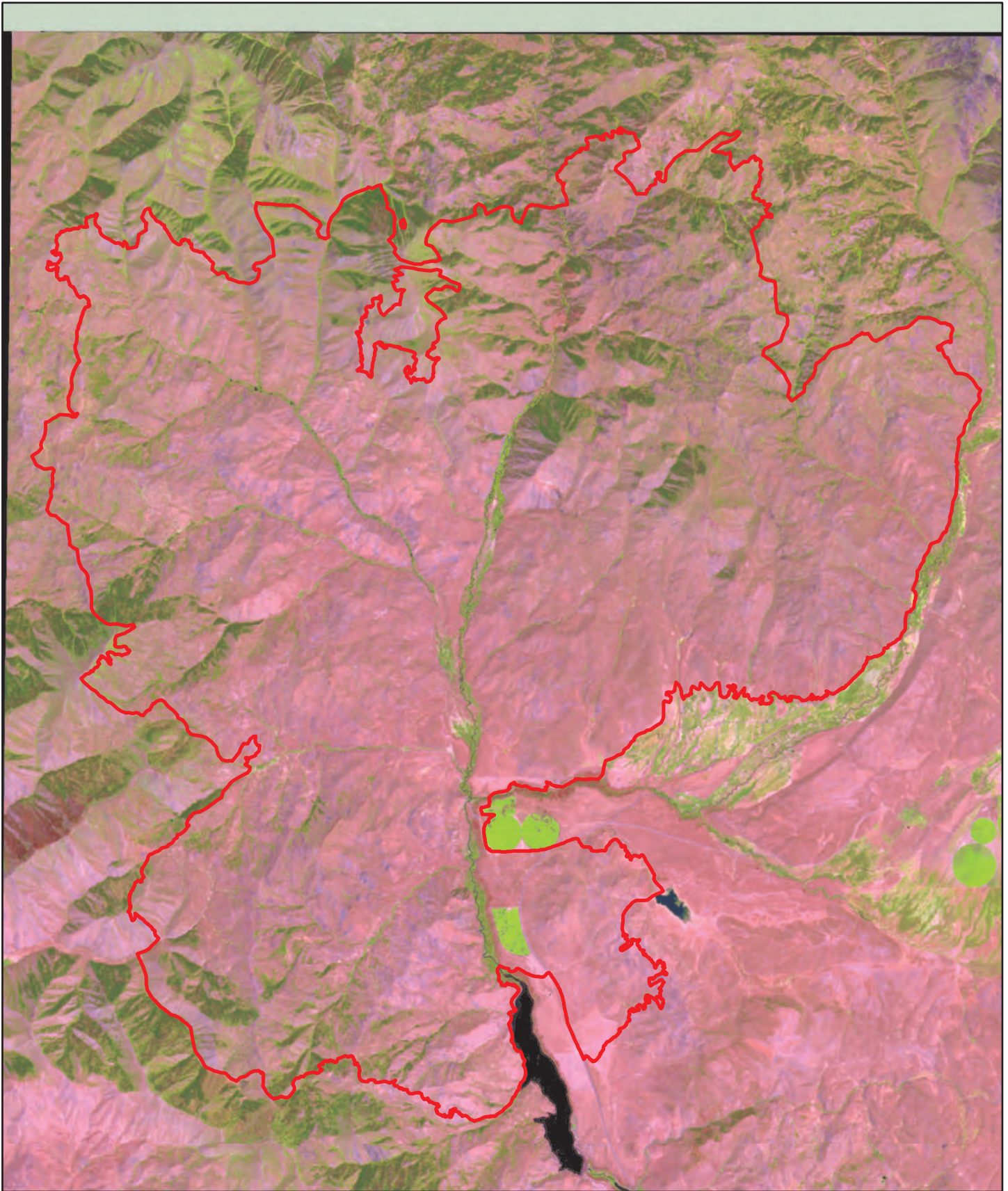


Sharps Fire (L12T) Sentinel 2 Pre Burn Vegetation



US Department of the Interior
Bureau of Land Management
Twin Falls District, Idaho

- FirePerimeter
- Bureau of Land Management
- Forest Service
- Private
- State

Sage-grouse
 Focal - 3,589 Acres
 Priority - 13,129 Acres
 Important - 32,210 Acres
 General - 17,195 Acres

64,764 Total Acres
 BLM - 23,843 Acres
 PVT - 19,585 Acres
 STATE - 10,031 Acres
 USFS - 11,305 Acres

Fence - 10 Miles



North arrow pointing up.
 1:114,382



These data are provided by Bureau of Land Management (BLM) "as is" and might contain errors or omissions. The User assumes the entire risk associated with its use of these data and bears all responsibility in determining whether these data are fit for the User's intended use.

