

THE PIONEERS ALLIANCE



What is the Pioneers Alliance?

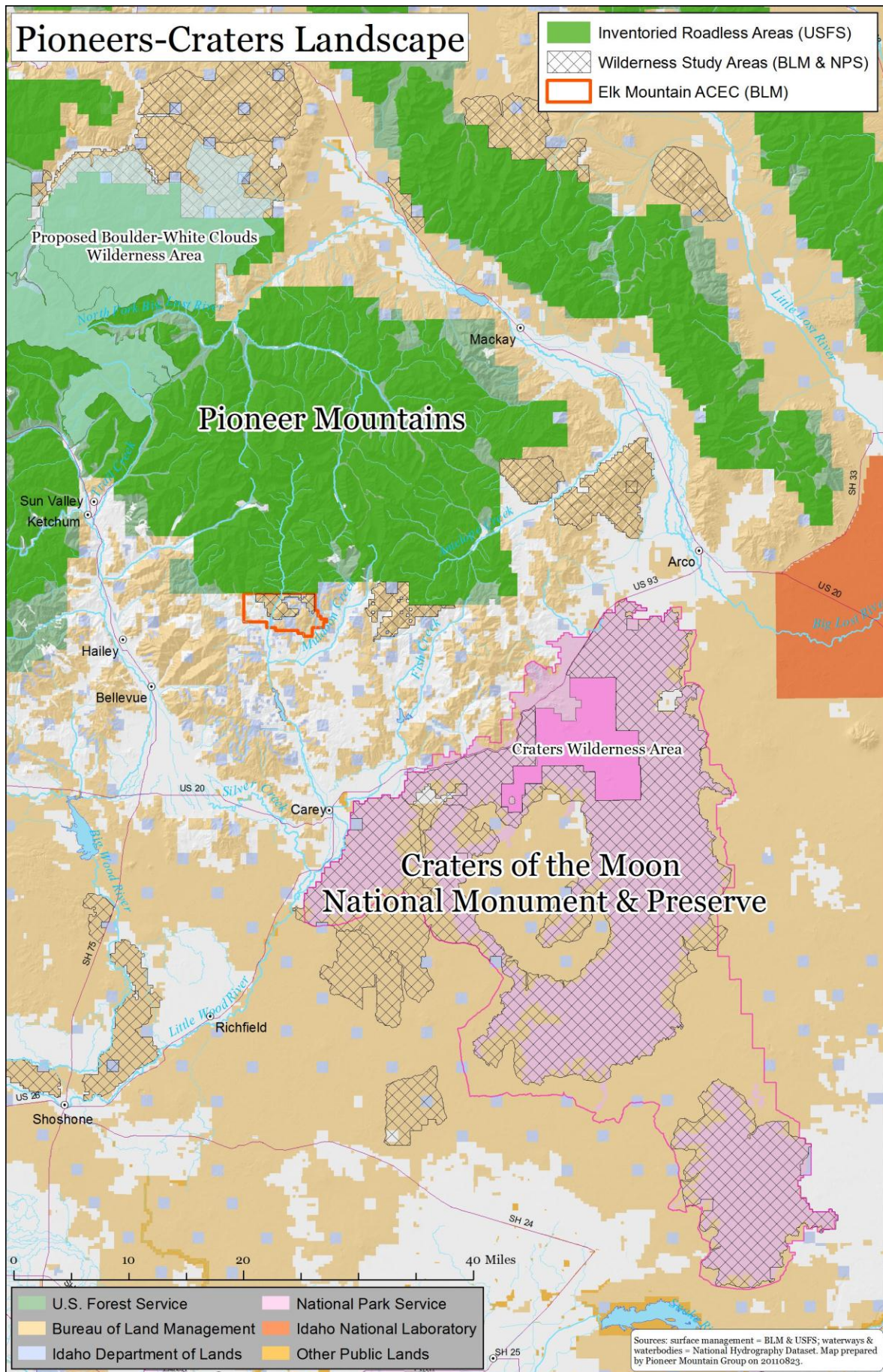
The Pioneers Alliance is a cooperative effort by ranchers, local residents, conservationists and public lands managers to conserve and enhance the natural and cultural values of the Pioneer Mountains and Craters of the Moon landscape of south-central Idaho.

The Pioneers-Craters landscape supports numerous working farms and ranches, abundant wildlife, and diverse recreational activities. We have a remarkable opportunity to protect what we love about this place – open spaces, access to mountains, foothills & desert, and rural communities – and build an economically, environmentally, and socially sustainable future. Private landowners, local residents and state and federal land managers play crucial roles in our success.

What are Our Goals?

The Pioneers Alliance strives to:

- Build an enduring base of citizen support and a community-based vision for the landscape.
- Foster good stewardship of private and public lands.
- Support local economic development compatible with the natural, community and cultural values of the landscape.
- Protect the working lands, rugged unspoiled backcountry, and migratory wildlife through private land conservation and federal land management.



For more information, contact: Mike Stevens • mike@pmgadvisors.com • 208-788-1410
 Visit the Pioneers Alliance website: <http://pioneersalliance.wordpress.com>

The Landscape:

Participants in the Pioneers Alliance work to create an enduring legacy of community-based stewardship and conservation in the Pioneer Mountains-Craters of the Moon landscape. One of the jewels of America's natural heritage, the Pioneers-Craters landscape ranges from sagebrush steppe, grasslands and lava flows to river, foothill and mountain ecosystems, supporting an array of wide-ranging and migratory wildlife.

The roughly 2.4-million acre Pioneers-Craters landscape includes extensive inventoried roadless, wilderness study and primitive areas managed by the Sawtooth and Salmon-Challis National Forests, the BLM-Shoshone Field Office, and the Craters of the Moon National Monument and Preserve.

The center of the landscape is a complex mixture of private, state and federal lands, including 150,000 acres of private lands, primarily working farms and ranches. These working lands physically connect large expanses of public lands to the north and south. Currently, approximately 32,000 acres or 21% of the private lands in the core area have been protected through voluntary conservation easements.

Participants in the Pioneers Alliance include:

Local residents	The Conservation Fund	Bureau of Land Management
Local elected leaders	Headwaters Economics	Idaho Department of Lands
Local ranchers & farmers	Idaho Conservation League	Idaho Department of Fish & Game
Local businesspeople	Lava Lake Institute	National Park Service
	The Nature Conservancy	Natural Resources Conservation Service
	Wood River Land Trust	U.S. Forest Service



Credit: Michael Stevens

For more information, contact: Mike Stevens • mike@pmgadvisors.com • 208-788-1410
Visit the Pioneers Alliance website: <http://pioneersalliance.wordpress.com>

Highlights from the Alliance's Recent Work:

- Worked with private landowners to secure conservation commitments on approximately 52,000 acres of private working ranches using voluntary conservation easements.
- Worked with the Natural Resources Conservation Service and nonprofit conservation organizations to secure over \$19 million for conservation in the region in the past 3 years. The Pioneer Mountains have been recognized as a priority area for the Natural Resources Conservation Service's Grassland Reserve Program (GRP), a national program to purchase conservation easements on working lands.
- Supported and participated in a local economic study and revitalization effort for the Carey community. Now encouraging efforts by the Carey Economic Revitalization Group to implement local economic development projects.
- Organized public meetings in Carey with community leaders, ranchers, local residents, and agency representatives. Topics have included Sage Grouse Initiative funds, Grassland Reserve Program assistance, BLM travel planning, hunting regulations, and economic development opportunities.
- Led efforts to defeat a proposal to construct a regional transmission line through the local community and along critical wildlife migration corridors.
- Documented pronghorn migration routes, including 150-mile route between the Pioneer Mountains and eastern Idaho. Documented multiple new sage-grouse leks and mule deer migration pathways.
- Built relationships with Idaho Congressional delegation, Office of the Governor, officials at federal Departments of Interior and Agriculture, state agency officials and national and regional conservation initiatives such as Heart of the Rockies and America's Great Outdoors.

For More Information about the Pioneers Alliance, Contact:

Mike Stevens, Pioneers Alliance Coordinator, 208-788-1410 or 208-720-2781

For Information about Conservation Easements, Contact:

Mark Davidson, The Nature Conservancy, 208-788-8988 or 208-720-2475

Keri York, Wood River Land Trust, 208-788-3947

For Information about Local Economic and Community Development Projects, Contact:

Vonnie Olsen, Carey City Council, 208-823-4330 or 208-309-2180